

ES-PDS-ES32F361X-2XLT-R2.PrjPcb

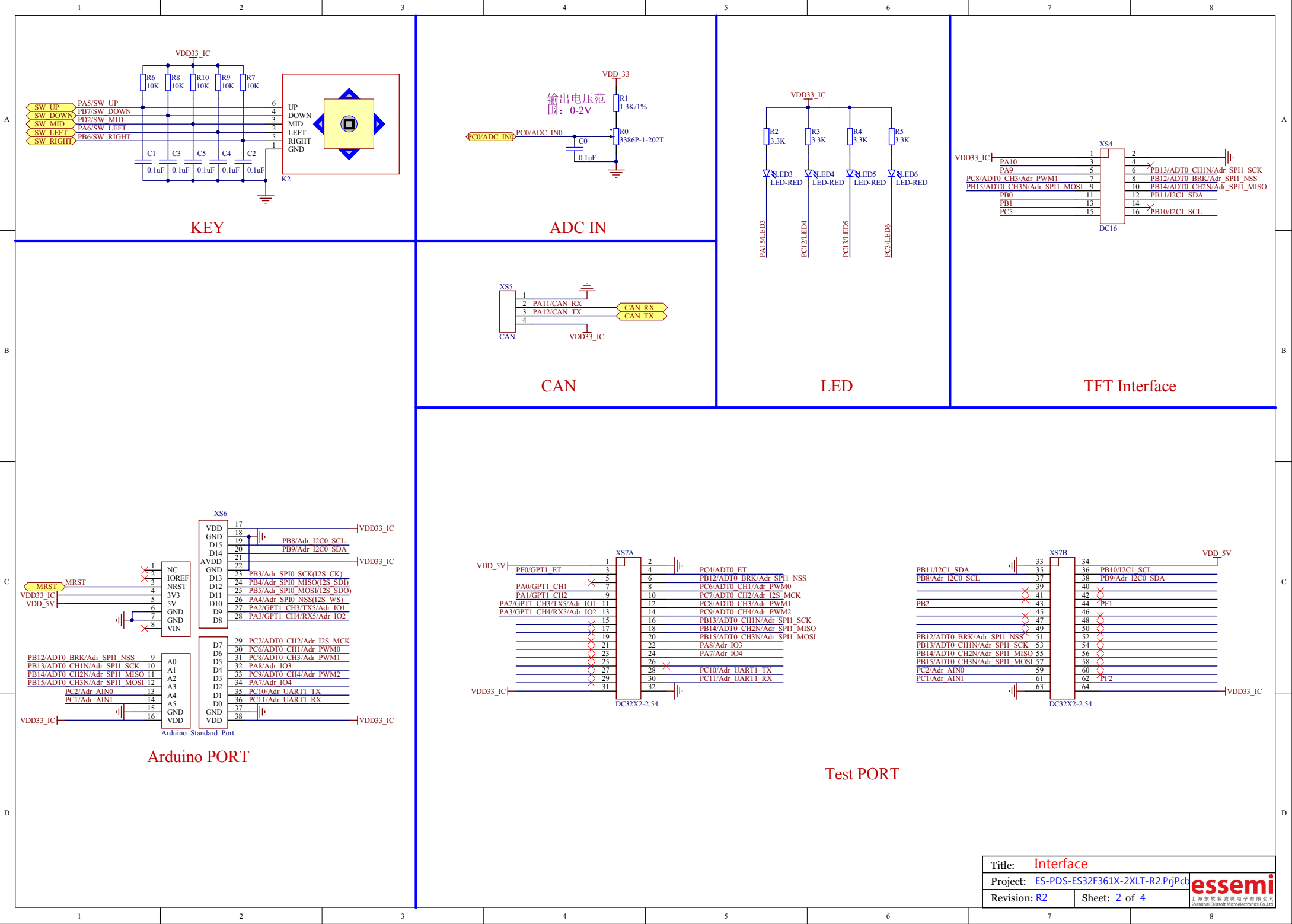
版本记录

V1.0:初版

R2:发布二版——SCH修改:

- 1) 接口XS6的D13/D12/D11从PA5/PA6/PA7改为PB3/PB4/PB5
- 2) 接口XS6的D9/D8从PB10/PB11改为PA2/PA3
- 3) 接口XS6的D2从PB3改为PA7
- 4) 按键K2的UP/LEFT从PB5/PB4改为PA5/PA6

| | | |
|---------------------|---------------------------------|---|
| Title: Cover | | essemi 上海东软载波微电子有限公司 Shanghai Eastsoft Microelectronics Co.,Ltd. |
| Project: | ES-PDS-ES32F361X-2XLT-R2.PrjPcb | |
| Revision: R2 | Sheet: 1 of 4 | |



A

B

C

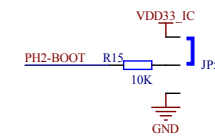
D

A

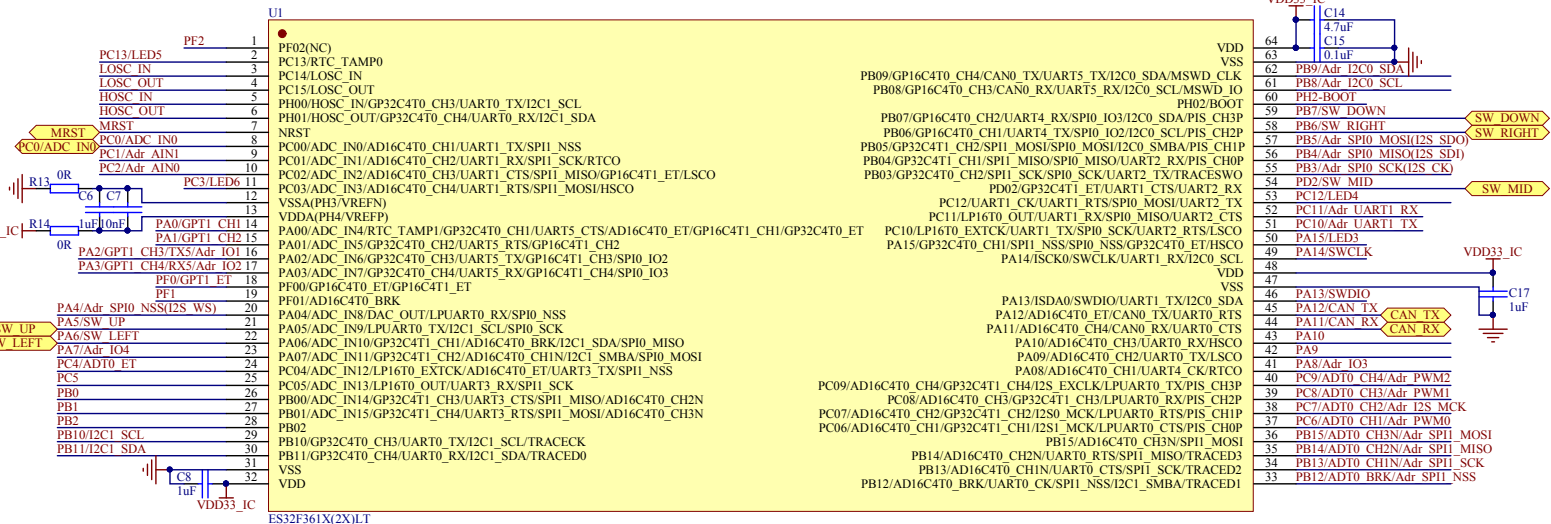
B

C

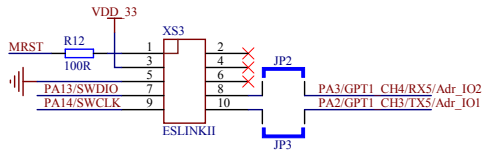
D



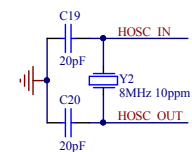
BOOT SELECT



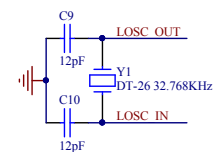
MCU



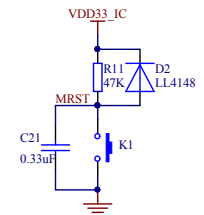
SWD



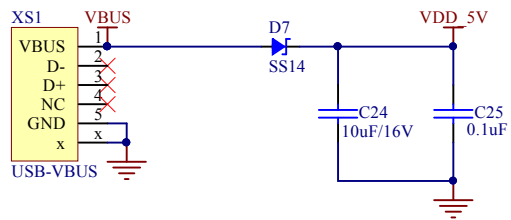
HOSC



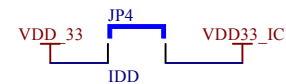
LOSC



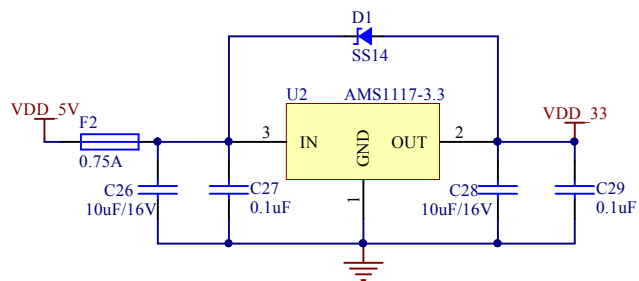
RESET



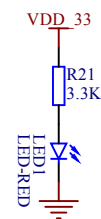
Micro-USB



IDD Measurement



LDO



Power_LED

| | |
|--|---------------|
| Title: Power | |
| Project: ES-PDS-ES32F361X-2XLT-R2.PrjPcb | |
| Revision: R2 | Sheet: 4 of 4 |