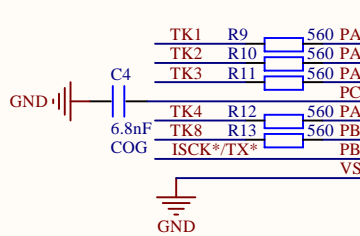
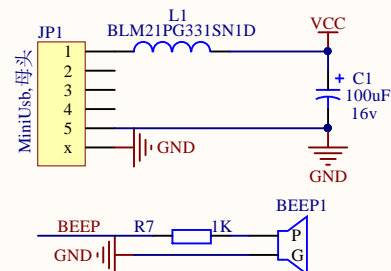
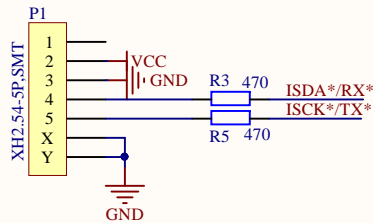
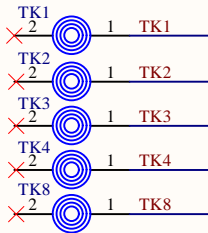


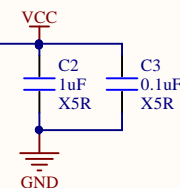
Spring



U1

TK1	R9	560	PA1	1	PA1/TK1/SSEG0/PWM211	VDD	16	VDD
TK2	R10	560	PA2	2	PA2/TK2/SSEG0/PWM210	PA0/TK0/SWCLK/SSEG0	15	PA0
TK3	R11	560	PA3	3	PA3/TK3/OSCI/SSEG0	PB4/TK18/AIN8/SCL/ISCK	14	PB4
			PC0	4	PC0/Cx	PE6/TK16/SCOM5/AIN2/SSEG3/KINT1/RX/PINT4	13	PE6
TK4	R12	560	PA4	5	PA4/TK4/OSCO/SSEG1/T10CKI	PE7/TK17/SCOM4/AIN3/SSEG3/TX/PINT5	12	PE7
TK8	R13	560	PB6	6	PB6/TK8/KIN0/PWM211*	PE4/TK14/AIN0/SSEG3/PINT2	11	PE4
ISCK*/TX*			PB7	7	PB7/TK9/PWM210*/SCL*/TX*/ISCK*	PE3/TK13/SSEG2/PWM200*	10	PE3
			VSS	8	VSS	PE0/TK10/SSEG2/SDA*/RX*/ISDA*	9	PE0

ES7P2124FHSD



Title		
ESD_TKT_7P2124_SOP16_Spring		
Size	Number	Revision
A4	1	1.0
Date:	2022/4/28	
File:	E:\altium project\..ESD_TKT_7P2124_SOP16_Spring_V1.0.SchDoc	

Comment	Description	Designator	Footprint	LibRef	Quantity
BEEP		BEEP1	BUZ8/10- 𠄎	BEEP	1
100uF	Polarized Capacitor	C1	EC100/16W	Cap Pol	1
1uF	Capacitor	C2	0603P	Capacitor	1
0.1uF	Capacitor	C3	0603P	Capacitor	1
6.8nF	Capacitor	C4	0603P	Capacitor	1
MiniUsb, 母头	Mini Usb Connector	JP1	MINIUSB	MiniUsb	1
BLM21PG331SN1D	Ferrite Bead	L1	6-0805_N	Inductor	1
LED	LED	LED1, LED2, LED3, LED4, LED5	led0805-ca	LED_Hole	5
XH2.54-5P,SMT		P1	XH2.54-5P-SMT	Header5-SMT	1
1K,5%	Resistor	R1, R2, R4, R6, R8	0603P	Resistor	5
470	Resistor	R3	0805F	Resistor	1
470	Resistor	R5	0603P	Resistor	1
1K	Resistor	R7	0603P	Resistor	1
560	Resistor	R9, R10, R11, R12, R13	0603P	Resistor	5
Spring		TK1, TK2, TK3, TK4, TK8	TK_Spring_15*10*17	TK_Spring	5
ES7P2124FHSD	SOP16	U1	sop16	ES7P2124FHSD	1